

OBSTA STIF 12 VDC & HISTIF 24 VDC

The OBSTA STIF 12 VDC and HISTIF 24 VDC beacon is devoted to the obstacle marking with a DC power supply. Its power consumption is lower than traditional cold discharge neon lights, thanks to a patented optic from OBSTA. It is recommended in severe environments (temperatures, etc.)



One-piece molded

- perfectly waterproof
- no grounding issue
- all wiring configuration available
- no rise from the ground potential (due to lightning for example)
- increased reliability

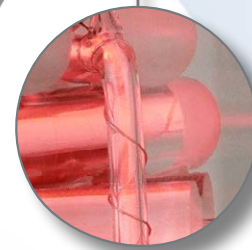


Power cable

- continuous Voltage
- power by a backup power source for continuity of the marking (batteries) or by a solar power source (photovoltaic panels)
- protected against transient voltages
- integrated self diagnostic of the light (control of a remote signalization or a backup light possible)



Patent :
EP 1966535B1 & US 7816843



Focalized neon light

- discharge light with 3 focalized stages
- patented technology
- cover and optical system in hard glass
- « aviation » red color
- very long life expectancy in all climatic environment
- great light efficiency
- power consumption twice lower than for the traditional neon lights

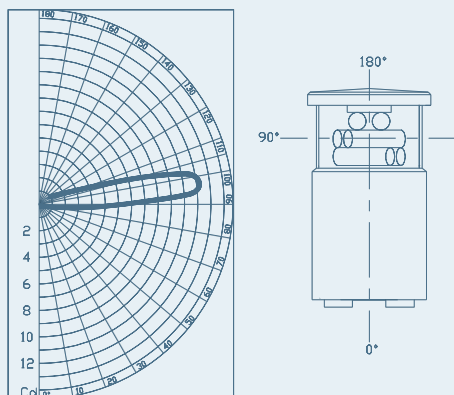
MAIN CHARACTERISTICS

OBSTA part number	Power supply	Luminous intensity	Current consumption	Nominal power	Lifetime (without any light decrease*)
113410	12 VDC	> 10 Cd	500 mA	< 6 W	decades
113330	24 VDC	> 32 Cd	750 mA	< 18 W	decades

* with power supply stabilized

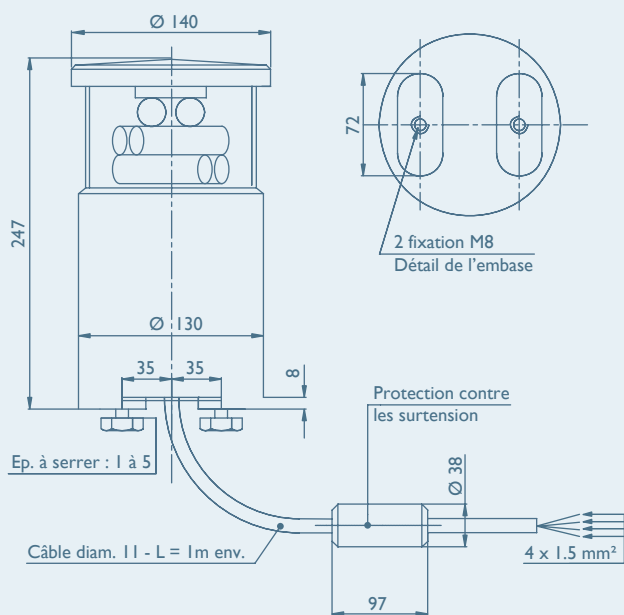
ADDITIONAL FEATURES

LIGHT INTENSITY DIAGRAM



	STIF
IP degree	66
Operating temperature	-30° + 60°C
Power supply	12 VDC (-10 % ; + 15 %) or 24VDC (-10 % ; +15 %)
Weight	3.1 kg
Attachment	2 screws type M8 (provided) Thickness to screw into : 1 up to 5 mm
Wiring	On stripped wires (2 power wires, 2 alarm wires)
Maintenance	none

DIMENSIONS (In mm)

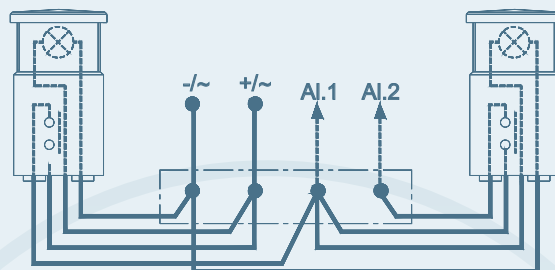


SPECIAL PRECAUTIONS

For chimney installation, install the light under the top (1.5 to 3m, 5 to 10ft), as per ICAO and FAA recommendations.
For installation in intense electromagnetic fields, the use of shielded wire is highly recommended.

OTHER FUNCTIONS

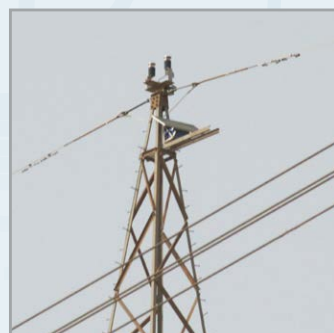
- Failure remote signalization by relay (see diagram)



- «Active redundancy» configuration allows the automatic turn on of a backup light and/or of an alarm in case of failure of the main light (see diagram)

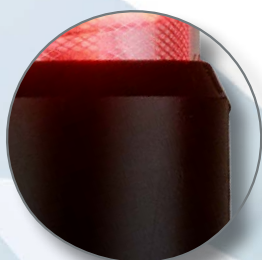
- Photocell controlled
- Light shielded as per standard EN 55011, class B

- Junction box (ref. 113140) (see page 32)
- Stainless steel mounting bracket (ref. 113125)
- Solar generator (see page 53)



OBSTA STI 48 VDC

The OBSTA STI is devoted to the marking of all kind of obstacles supplied by a standalone DC power source in 48V.



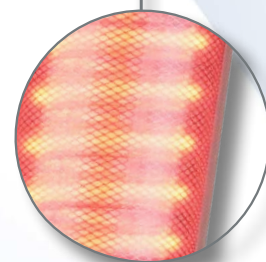
One-piece molded

- perfectly waterproof
- no grounding issue
- all wiring configuration available
- no rise from the ground potential (due to lightning for example)
- increased reliability



Power cable

- continuous Voltage
- power by a backup power source for continuity of the marking (batteries)
- protected against transient voltages
- integrated self diagnostic of the light (control of a remote signalization or a backup light possible)



Neon light

- 5 turns
- hard glass cover and tube
- «aviation» red color
- very long life expectancy in all climatic environment
- great light efficiency
- luminosity substantially higher than what is recommended by ICAO and FAA
- low power consumption

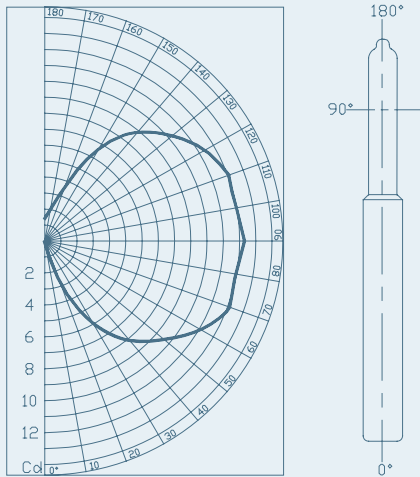
MAIN CHARACTERISTICS

OBSTA part number	Power supply	Luminous intensity	Current consumption	Nominal power	Lifetime (without any light decrease*)
113200	48 V continuous	> 10 Cd	250 mA	12W	decades

Other voltage : 12 and 24 V : consult us
* with power supply stabilize

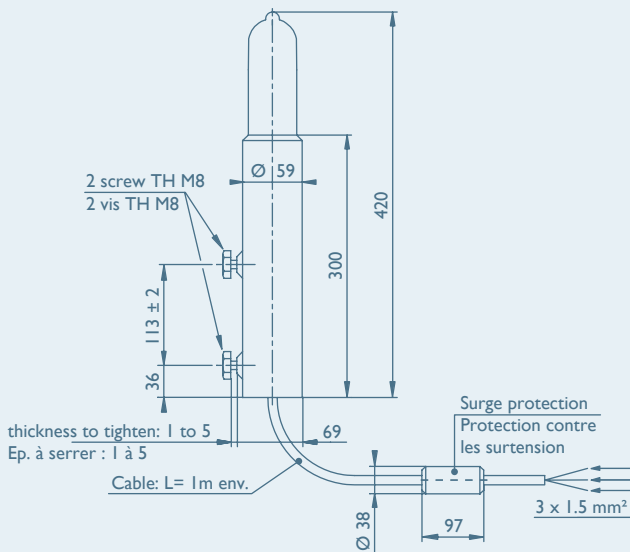
ADDITIONAL FEATURES

LIGHT INTENSITY DIAGRAM



	STI
IP degree	66
Operating temperature	-20° + 60°C
Power supply voltage	48 V (-10% ; + 15%)
Weight	1.5 kg
Attachment	2 screws type M8 (provided) Thickness to screw into : 1 à 5 mm
Wiring	On stripped wires (2 power wires, 2 alarm wires)

DIMENSIONS (en mm)

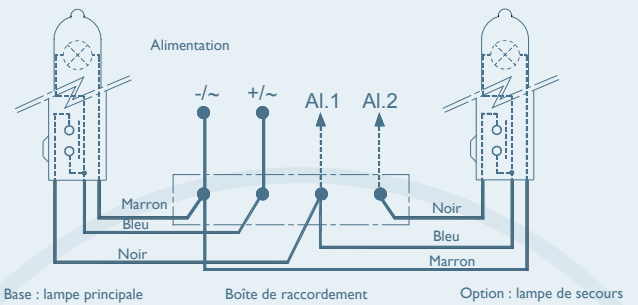


SPECIAL PRECAUTIONS

For chimney installation, install the light under the top (1.5 to 3m, 5 to 10ft), as per ICAO and FAA recommendations.
For installation in intense electromagnetic fields, the use of shielded wire is highly recommended.

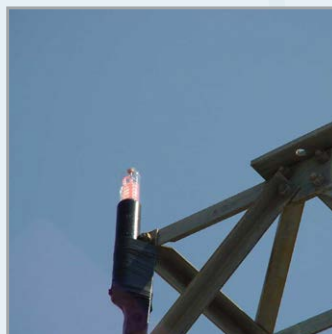
OTHER FUNCTIONS

- Failure remote signalization by relay (see diagram)



- «Active Redundancy» configuration allows the automatic turn on of a backup light and/or of an alarm in case of failure of the main light. (see diagram)
- Photocell controlled
- Light shielded as per standard EN 55011, class B

- Junction box (ref. 113140)
- Stainless steel mounting bracket (ref. 113121 for one light and 113124 for two lights)
- Solar generator (see page 53)
- Connection accessories (see page 32)



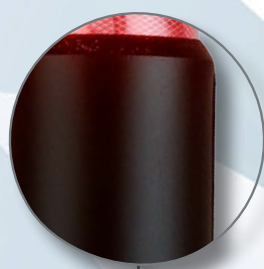
OBSTA HISTI 110 to 240 VAC

The OBSTA HI STI is devoted to the marking of all kinds of obstacles such as buildings, airports, broadband towers, high voltage power poles.

One model allow can cover every voltage from 110VAC up to 240VAC

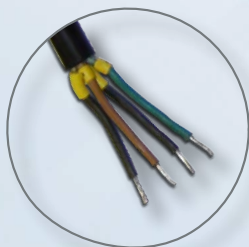
In intense electromagnetic fields (radiant poles, multi directional radio antennas), it is recommended to use the OBSTA HI STIM code 113150 (see page 26)

FAA L 810



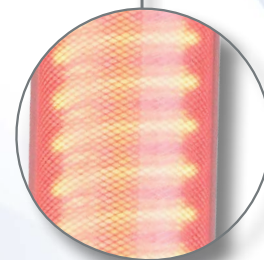
One-piece molded

- perfectly waterproof
- no grounding issue
- all wiring configuration available
- no rise from the ground potential (due to lightning for example)
- increased reliability



Power cable

- 110 VAC up to 240 VAC
- protected against transient overvoltages
- alarm relay in case of lamp failure or low power



Neon light

- 13 turns
- hard glass cover and tube
- «aviation » red color
- very long life expectancy in all climatic environment
- great light efficiency
- luminosity substantially higher than what is recommended by ICAO and FAA
- low power consumption

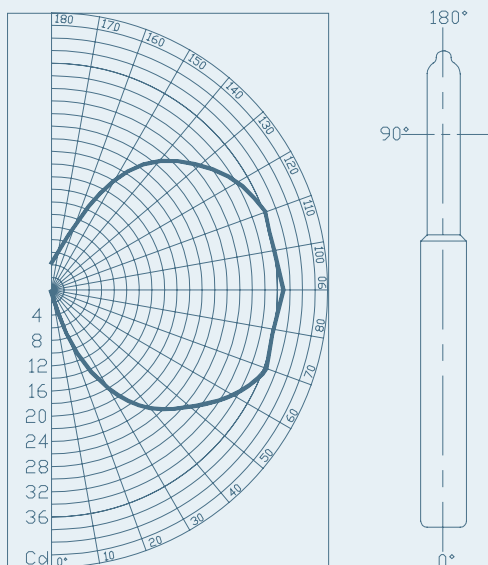
MAIN CHARACTERISTICS

OBSTA part number	Power supply	Luminous intensity	Current consumption	Nominal power	Theoretical lifetime (without any light decrease*)
HISTI ref. 113110	from 110 V eff. up to 240 V 50/60 Hz	> 32 Cd	110V - 730 mA 240 V - 370 mA	45 W	10 years

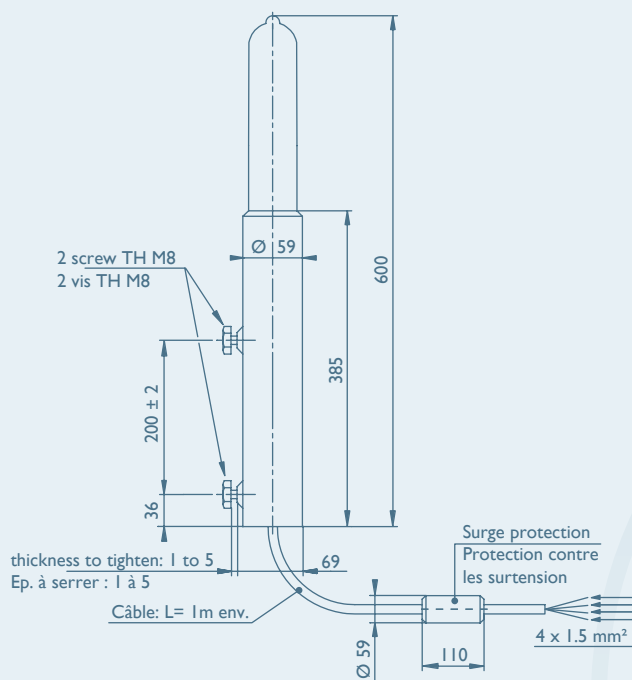
* with power supply stabilized

ADDITIONAL FEATURES

LIGHT INTENSITY DIAGRAM



DIMENSIONS (in mm)



	HISTI
IP degree	66
Operating temperature	-30° + 60°C
Power supply voltage	from 110 up to 240V (+/-10%) 50/60 Hz
Weight	2.3 kg
Attachment	2 screws type M8 (provided) Thickness to screw into : 1 up to 5 mm
Wiring	On stripped wires (2 power wires, 2 alarm wires)

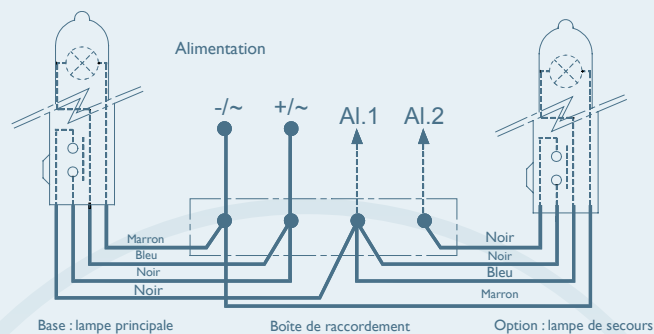
SPECIAL PRECAUTIONS

For chimney installation, install the light under the top (1.5 to 3m, 5 to 10ft), as per ICAO and FAA recommendations.

For installation in intense electromagnetic fields, the use of shielded wire is highly recommended.

OTHER FUNCTIONS

- Failure remote signalization by relay (see diagram)



- «Active redundancy» configuration allows the automatic turn on of a backup light and/or of an alarm in case of failure of the main light (see diagram)

- Photocell controlled

- Light shielded as per standard EN 55011, class B

- **Stainless steel mounting bracket** (ref. 113121 for one light and 113124 for two lights)

- **Connection accessories** (see page 32)

